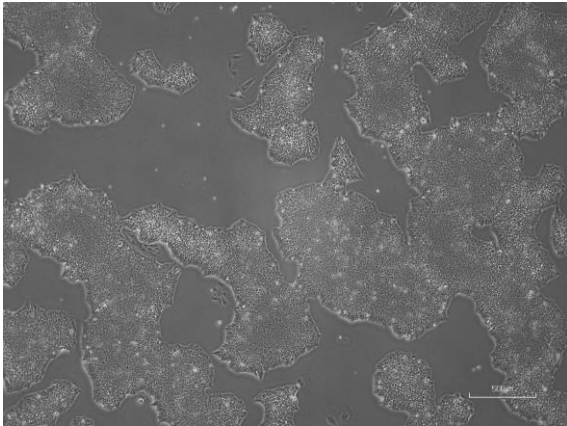
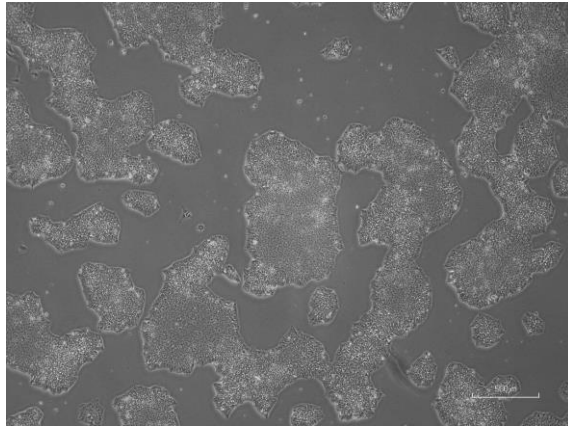


【 CiRA-jk-0133 】 Morphology of iPSC colonies

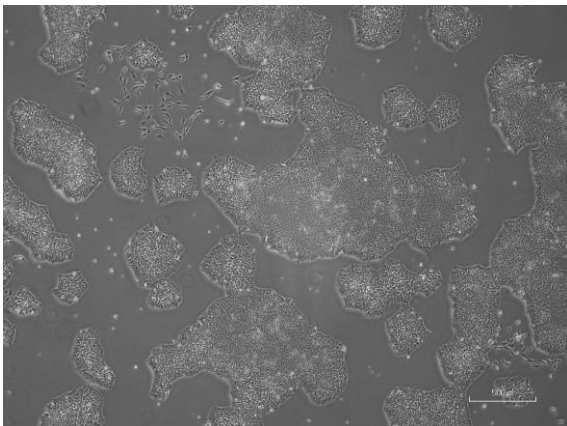
CiRA-jk-0133-A: passage-3



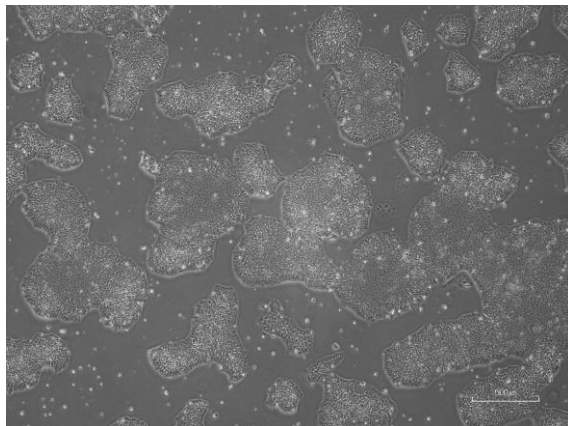
CiRA -jk-0133-B: passage-3



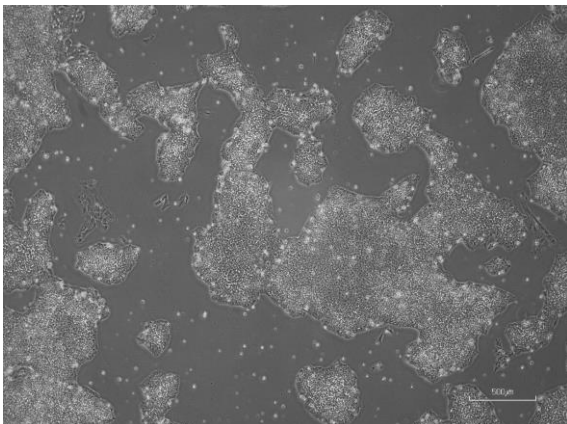
CiRA -jk-0133-C: passage-3



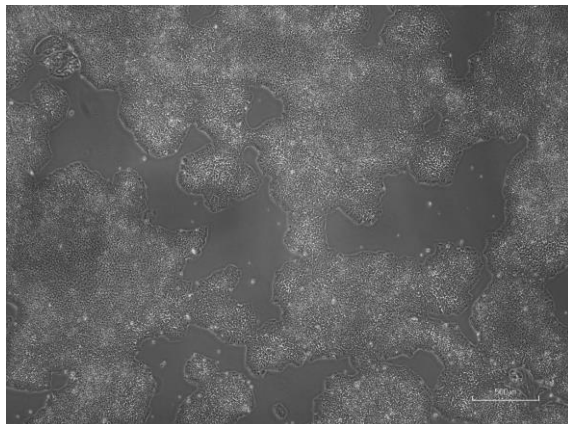
CiRA -jk-0133-D: passage-3



CiRA -jk-0133-E: passage-3



CiRA -jk-0133-F: passage-3



(All images were captured at 4x magnification)